



# Science & Math Interactive Learning Experience

a S.T.E.A.M. camp for

**Academically and/or Intellectually Gifted - 5<sup>th</sup> to 8<sup>th</sup> grade students**

## What is SMILE?

SMILE Camp is an unequalled S.T.E.A.M. (Science, Technology, Engineering, Art of Creativity & Mathematics) experience!

**Science:** We use a constantly changing series of hands-on experiments to explore fundamental science, engineering, design, physics, and chemistry principles.

**Math:** Students quantify and interpret data, identify mathematical structures, discover and solve equations, and develop a sense of scale as we explore phenomena in a variety of materials from the nano to the macro.

**Interactive:** With a camper to college or graduate student mentor ratio of 3:1, SMILE Camp provides a safe and highly interactive environment. The campers are in the driver's seat -- they carry out the experiments, drive the electron microscopes, and operate the analytical equipment while interacting with mentors, engineers, scientists and gifted students like themselves.

**Learning:** The campers do experiments and learn science not available in a regular school setting. Our goal is to encourage student interest by exposing students to real science in real laboratories. Students will learn the scientific method in practice as well as theory, challenging these gifted students to go above and beyond.

**Experience:** In this camp, we do really cool science experiments! These are experiments that normally only college students would have access to. All products of the experiments are for the students to keep.

- The experiments each month will always be different. Sign up for one camp or all 8.
- For further information on SMILE and upcoming camps, go to our registration page.
- Each camper will receive a Camp T-shirt each year, a pair of safety glasses to keep, experiment handouts, lab supplies and an opportunity to SMILE.

## Dates and times

Saturday, Nov. 1<sup>st</sup>, Nov. 22<sup>nd</sup>, Dec. 6<sup>th</sup>, Jan. 24<sup>th</sup>, Feb. 21<sup>st</sup>, Mar21<sup>st</sup>, Apr. 18<sup>th</sup>, & May 16<sup>th</sup>

Register for one 3 hour session - either 10am-1pm or 2pm-5pm.

Summer camp registration will open in December.

## Location

Centennial Campus Middle School: 1900 Main Campus Drive, Raleigh, NC 27606.

## Cost

Tuition - \$55 per student per session. A different program each month. A \$20 deposit to reserve a spot. \$35 balance is due 1 week before camp. Need based scholarships available – email Karen.

For more information: registration, dates, map, etc. go to: [smilecamp.org](http://smilecamp.org)

For school related questions, contact Karen. For experiment and technical information contact Toby. For administrative and registration information contact Roger.

SMILE,

**Karen Russell**  
krussell@wcpss.net

**Toby Tung**  
toby@smilecamp.org

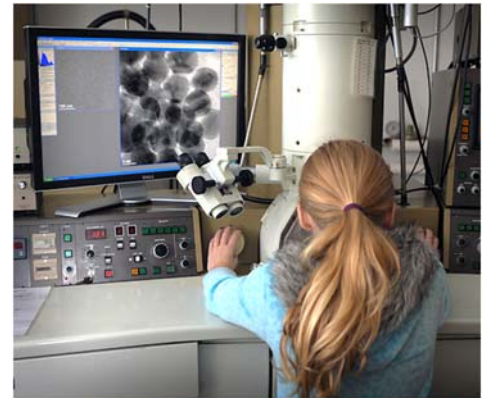
**Roger Russell**  
roger@smilecamp.org  
919 608-3540



SMILE Camp is known for fun and exciting hands-on science experiments that spark curiosity and imagination! Our mentors have a contagious enthusiasm for science they want to share. While everything that SMILE Camp does is unique, there is a sense of community created by being in an environment with “kids like me”. Each experiment offers individual students opportunities for creativity.



SMILE is more than the sum of the individual experiments. SMILE is discovering, creating, interacting, and learning how things work! Science, Math, hands-on creativity, and experimentation are the tools that create the SMILE camp experience.



SMILE experiment products continue to provide a sense of wonder even after they go home. We use lab notebooks to record notes, sketches, and data. Later, campers can extend their knowledge at home using their lab notes to build vocabulary and deeper intellectual understanding.



Excitement and “aha moments” provide essential feedback to maintain an interest in science and math through middle, high school and beyond. SMILE camp strives to inspire the next generation of engineers, scientists, biologists, chemists, mathematicians, and technologists of ALL types.



To register or get more information visit  
[smilecamp.org](http://smilecamp.org)

